

# VIZZONI

**TIRES**

**A  
GRIP ON THE  
FUTURE**



CATALOGUE

**OFF THE ROAD RADIAL TIRES**

# THE JOURNEY BEGINS HERE

## WELCOME TO THE NEW WORLD VIZZONI

## ABOUT VIZZONI

With more than 10+ years of worldwide presence, VIZZONI TIRES is committed to providing remarkable quality and high safety standards for tires of every kind. Our brand promises to go above and beyond to provide you with the best-performing tires.

A smooth affair - Vizzoni Tires aims to offer a driving experience that delivers the utmost comfort, excellent braking mechanism, and maximum safety to those on-road.

We cater to all your demands by offering a versatile and vast range to pick from as per your need.

Vizzoni Tires has a comprehensive understanding of tires and unlocks the potential of "one brand, several options". Hence we offer solutions for Passenger Car Radials, High Performance, Ultra High Performance, 4x4 & SUV, VAN - Commercial, Truck Bus Radial, OTR - Radial, OTR - Bias, Industrial & Agricultural.



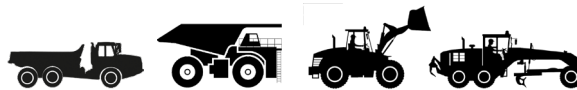
# OTR SELECTION CHART

RADIAL OTR TYRES										BAIS OTR		
SIZES	VZA1	VZA2	VZA3	VZA5	VZA6	VZA8	VZB2	VZB3	VZB5	VZE45A	VZE46A	VZSS3
14.00R20												
12.00R24		★										
14.00R24							★	★				
14.00R25				★								
16.00R24							★					
16.00R25				★								
17.5R25	★											
20.5R25	★											
23.5R25	★											
26.5R25	★		★									
29.5R25	★		★			★			★			
29.5R29	★											
18.00R25					★			★				
18.00R33		★										
21.00R33												
21.00R35												
24.00R35		★										
35/65R33						★						
17.5-25										★		
20.5-25										★		
23.5-25										★		
26.5-25										★		
14.00-24											★	
18.00-25											★	
21.00-25											★	
10-16.5												★

CODE INDICATION												
TRA	VZA1	VZA2	VZA3	VZA5	VZA6	VZA8	VZB2	VZB3	VZB5	VZE45A	VZE46A	VZSS3
E3 / L3	★		★							★		
E2				★	★							
E3												
E4		★							★			
G2							★					
L5						★						
L5s												
IND3											★	
IND4								★			★	
IND5								★				



## VZA1



- ▶ Versatile tread pattern designed for loader, dozer and other equipment used for construction, stockpile and Superior Traction
- ▶ Ensures a very comfortable ride due to superb stability
- ▶ The inner is lined with a specially designed compound to prevent air leakage

TIRE SIZE	TRA	STAR RATING	TYPE	RIM WIDTH & FLANGE	TREAD DEPTH		LOAD INDEX/ SPEED SYMBOL	TYRE INFLATED DIMENSION		MAX LOAD & INFLATION PRESSURE (kg/kpa) TRA	
					(mm)	(32nds)		SECTION WIDTH (mm)	OVERALL DIAMETER (mm)	50 KM/H	10 KM/H
17.5R25 (445/80R25)	E3/L3	*	TL	14.00/1.5	28	35/32	157B/176A2	445	1348	4125/375	7100/500
		**					167B/182A2			5450/525	8500/650
20.5R25 (525/80R25)	E3/L3	*	TL	17.00/2.0	26	33/32	168B/186A2	520	1492	5600/375	9500/500
		**					177B/193A2			7300/525	11500/650
23.5R25	E3/L3	*	TL	19.5/2.5	31.5	40/32	176B/195A2	597	1617	7100/375	12150/500
		**					185 B			9250/525	
26.5R25	E3/L3	*	TL	22.00/3.0	26	45/32	184B/202A2	673	1750	9000/375	15000/500
		**					193B/209A2			11500/525	18500/650
29.5R25	E3/L3	*	TL	25.00/3.5	43	54/32	184B/208A2	750	1873	10900/375	18000/500
		**					193B/209A2			14000/525	22400/650
29.5R29	E3/L3	*	TL	25.00/3.5	43	54/32	211 B	750	1975	11500/375	19500/500
		**					218 B			15000/525	23600/650



## VZA2



- ▶ Excellent traction and floating offers comfortable handling
- ▶ Superior long tread life and excellent puncture resistance
- ▶ Low rolling resistance and fuel efficient
- ▶ Non-directional deep tread pattern design for muddy and soft surfaces

TIRE SIZE	TRA	STAR RATING	TYPE	RIM WIDTH & FLANGE	TREAD DEPTH		LOAD INDEX/ SPEED SYMBOL	TYRE INFLATED DIMENSION		MAX LOAD & INFLATION PRESSURE (kg/kpa) TRA	
					(mm)	(32nds)		SECTION WIDTH (mm)	OVERALL DIAMETER (mm)	50 KM/H	10 KM/H
18.00R33	E4	**	TL	13.00/2.5	54	68/32	191B	500	1875	10900/700	
24.00R35	E4	**	TL	17.00/3.5	57	72/32	209B	655	2175	18500/700	



## VZA3



- ▶ Non-directional traction and standard tread depth pattern design
- ▶ Excellent performance support with temperature resistant compound
- ▶ Primarily designed for mining, off the road and muddy surface applications

TIRE SIZE	TRA	STAR RATING	TYPE	RIM WIDTH & FLANGE	TREAD DEPTH		LOAD INDEX/ SPEED SYMBOL	TYRE INFLATED DIMENSION		MAX LOAD & INFLATION PRESSURE (kg/kpa) TRA	
					(mm)	(32nds)		SECTION WIDTH (mm)	OVERALL DIAMETER (mm)	50 KM/H	10 KM/H
26.5R25	E3/L3	*	TL	22.00/3.0	38.5	49/32	184B/209A2	673	1750		18500/650
		**					193B/209A2				
29.5R25	E3/L3	*	TL	25.00/3.5	43	54/32	191B/208A2	750	1873		22400/650
		**					200B/216A2				



## VZA5



- ▶ Primarily designed for high-speed long-haul application
- ▶ Superior comfortable ride
- ▶ Superior traction on all surfaces

TIRE SIZE	TRA	STAR RATING	TYPE	RIM WIDTH & FLANGE	TREAD DEPTH		LOAD INDEX/ SPEED SYMBOL	TYRE INFLATED DIMENTION		MAX LOAD & INFLATION PRESSURE (kg/kpa) TRA	
					(mm)	(32nds)		SECTION WIDTH (mm)	OVERALL DIAMETER (mm)	50 KM/H	10 KM/H
14.00R25 (385/95R25)	E2	***	TL	10.00/2.0			170E	275	1368		
16.00R25 (445/95R25)	E2	*	TL	11.25/2.0	25	31/32	167B	432	1493	5450/475	
		**					177B			7300/700	
		***					177E				



## VZA6



- ▶ This new generation of tread design offers exceptional abrasiveness and fuel economy
- ▶ Mobile crane tire designed for on-off highway application
- ▶ It offers superior durability and cool running with high speed

TIRE SIZE	TRA	STAR RATING	TYPE	RIM WIDTH & FLANGE	TREAD DEPTH		LOAD INDEX/ SPEED SYMBOL	TYRE INFLATED DIMENSION		MAX LOAD & INFLATION PRESSURE (kg/kpa) TRA	
					(mm)	(32nds)		SECTION WIDTH (mm)	OVERALL DIAMETER (mm)	50 KM/H	10 KM/H
18.00R25 (505/95R25)	E2	*	TL	13.00/2.5	30	38/32	176B	498	1615	7100/475	
		**					185B			9250/700	



## VZA8



- ▶ Extra deep tread pattern is specially designed for loaders and dozers on extreme rock surface in open pit, quarries and underground mines
- ▶ Superior sidewall cut resistance
- ▶ Exceptional casing durability

TIRE SIZE	TRA	STAR RATING	TYPE	RIM WIDTH & FLANGE	TREAD DEPTH		LOAD INDEX/SPEED SYMBOL	TYRE INFLATED DIMENSION		MAX LOAD & INFLATION PRESSURE (kg/kpa) TRA	
					(mm)	(32nds)		SECTION WIDTH (mm)	OVERALL DIAMETER (mm)	50 KM/H	10 KM/H
29.5R25	L5	*	TL	25.00/3.5	95	120/32	208A2	750	1920	18000/500	
		216A2					22400/650				
35/65R33	L5	*	TL	28.00/3.5	95	120/32	217A2	890	2075	23000/500	
		**									



## VZB2



- ▶ Suitable for grader with stable contour
- ▶ Unique Pattern design excellent traction and grip
- ▶ Superior traction in sand, stone, mud and other surfaces

TIRE SIZE	TRA	STAR RATING	TYPE	RIM WIDTH & FLANGE	TREAD DEPTH		LOAD INDEX/SPEED SYMBOL	TYRE INFLATED DIMENSION		MAX LOAD & INFLATION PRESSURE (kg/kpa) TRA	
					(mm)	(32nds)		SECTION WIDTH (mm)	OVERALL DIAMETER (mm)	50 KM/H	10 KM/H
14.00R24	G2	*/*	TL	8.00TG	26	33/32	153A8	360	1350	3650/375(40KM/H)	
16.00R25	G2	*/*	TL	10.00VA	28	35/32	161A8	425	1460	4625/375(40KM/H)	



## VZB3



- ▶ Suitable for Straddle Carrier, Forklifts and other Port Equipments
- ▶ Special tire construction design has Ultra-Deep Tread
- ▶ Excellent carrying capacity and long service life
- ▶ Excellent traction and grip performance

TIRE SIZE	TRA	STAR RATING	TYPE	RIM WIDTH & FLANGE	TREAD DEPTH		LOAD INDEX/SPEED SYMBOL	TYRE INFLATED DIMENSION		MAX LOAD & INFLATION PRESSURE (kg/kpa) TRA	
					(mm)	(32nds)		SECTION WIDTH (mm)	OVERALL DIAMETER (mm)	50 KM/H	10 KM/H
14.00R24	IND-5	★★★	TT/TL	10.00W/10.0	60	75/32	196A5	375	1368	12500/1000(25KM/H)	
18.00R25	IND-4	★★★	TL	13.00/2.5	63.5	80/32	214/A5	498	1673	21200/1000(25KM/H)	



## VZB5



- ▶ Specially designed for mine dump trucks
- ▶ Special Pattern design with elegant foot expression
- ▶ Excellent traction and grip performance
- ▶ Cut and puncture resistant

TIRE SIZE	TRA	STAR RATING	TYPE	RIM WIDTH & FLANGE	TREAD DEPTH		LOAD INDEX/SPEED SYMBOL	TYRE INFLATED DIMENSION		MAX LOAD & INFLATION PRESSURE (kg/kpa) TRA	
					(mm)	(32nds)		SECTION WIDTH (mm)	OVERALL DIAMETER (mm)	50 KM/H	10 KM/H
29.5R25	E4/L4	*	TL	25.00/3.5	57	72/32	191B/208A2	750	1873	1800/500	
		200B/216A2					22400/650				





## VZE45A



- ▶ Aggressive trad for optimal traction
- ▶ Sturdy tread elements for maximum torque transmission

TYRE SIZE	TRA	PLY RATING	TYPE	STANDARD RIM	INFLATED SIZE (mm)		MAXIMUM LOAD (kg)	
					S.W.	O.D.	50 KM/H	10 KM/H
17.5 - 25	E3/L3	20	TT/TL	14.00/1.5	445	1350	5000	8250
20.5 - 25	E3/L3	20	TT/TL	17.00/2.0	520	1490	6000	9500
23.5 - 25	E3/L3	20	TT/TL	19.50/2.5	595	1615	7300	10900
26.5 - 25	E3/L3	28	TT/TL	22.00/3.0	675	1750	9250	14000
29.5 - 25	E3/L3	28	TT/TL	25.00/3.5	750	1975	12150	19000



## VZE46A



- ▶ Suitable for Straddle Carrier, Forklifts and other Port Equipments
- ▶ Excellent carrying capacity and long service life

TYRE SIZE	TRA	PLY RATING	TYPE	STANDARD RIM	INFLATED SIZE (mm)		MAXIMUM LOAD (kg)	
					S.W.	O.D.	50 KM/H	10 KM/H
1400-24	IND-3 / E4	36	TT	10.00	375	1370	6150	10500
1800-25	IND-4 / E4	40	TL	13.00/2.5	495	1675	20600	27600
2100-25	IND-4 / E4	48	TL	15.00/3.0	575	1750	11800	20600



## VZSS3



- ▶ Directional design for excellent traction
- ▶ Deep tread design and special traction pattern
- ▶ Improved performance and has excellent self cleaning properties

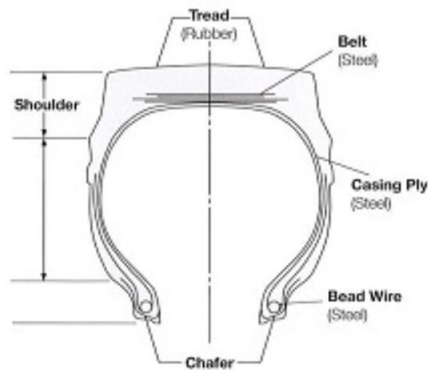
SIZE	PR	STANDARD RIM	OVERALL DIAMETER (Inch)	THREAD DEPTH	SECTION WIDTH (Inch)	WEIGHT (lb)	LOAD CAP (lb)
10-16.5	12	8.25	31	36.5	11	71	4714

## CONVERSION TABLE – STAR RATING TO PLY RATING

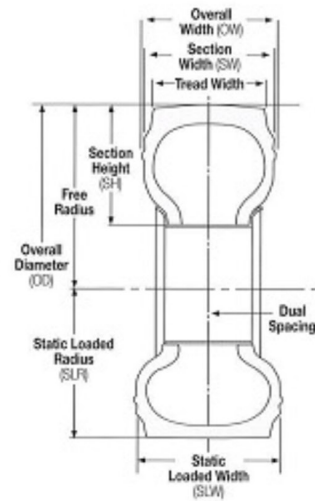
Service	Tire Size	Star Rating	Corresponding Ply Rating
Earthmover	14.00R24	***	up to 32
	14.00R25	***	up to 32
	16.00R25	**	up to 36
	18.00R25	**	up to 36
	18.00R33	**	up to 40
	21.00R33	**	up to 36
	21.00R35	**	up to 44
	24.00R35	**	up to 48
	24.00R49	**	up to 48
	27.00R49	**	up to 54
	30.00R51	**	up to 58
	33.00R51	**	up to 64
	36.00R51	**	up to 66
	40.00R57	**	up to 74
	17.5R25	**	up to 20
	20.5R25	**	up to 28
	23.5R25	**	up to 32
	26.5R25	**	up to 32
	29.5R25	**	up to 34
	29.5R29	**	up to 40
Grader	13.00R24	**	up to 16
	14.00R24	*	up to 18
	16.00R24	**	up to 18
Loader	20.5R25	**	up to 28
	23.5R25	**	up to 32
	26.5R25	**	up to 34
	35/65R33	**	up to 48
Port Application	12.00R20	**	20 PR
	12.00R24	**	20 PR
	14.00R24	***	28 PR
	16.00R25	**	32 PR
	16.00R25	***	36 PR
	18.00R25	***	40 PR
	18.00R33	***	40 PR

# GENERAL INFORMATION

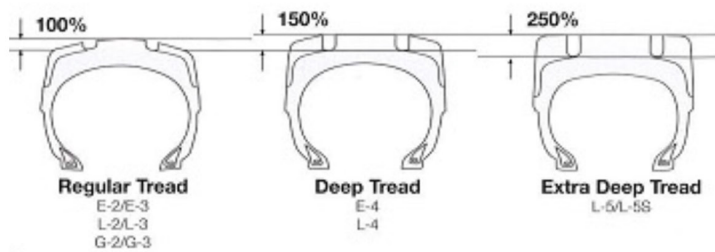
**All Steel Radial Tire Construction**



**Tire Dimension**



**Tread Depth TRA Classification**



## INFLATION PRESSURE TABLE

Kg/ cm <sup>2</sup>	PSI	Kpa	Bar
6.4	91	620	6.2
6.5	92	630	6.3
6.6	94	640	6.4
6.7	95	650	6.5
6.8	97	660	6.6
6.9	98	670	6.7
7	99	680	6.8
7.1	101	690	6.9
7.2	102	700	7
7.3	104	710	7.1
7.4	105	720	7.2
7.5	107	730	7.3
7.6	108	740	7.4

Kg/ cm <sup>2</sup>	PSI	Kpa	Bar
7.7	109	750	7.5
7.8	111	760	7.6
7.9	112	770	7.7
8	114	780	7.8
8.1	115	790	7.9
8.2	116	800	8
8.3	118	810	8.1
8.4	119	820	8.2
8.5	121	830	8.3
8.6	122	840	8.4
8.7	124	850	8.5
8.8	125	860	8.6
8.9	126	870	8.7

Kg/ cm <sup>2</sup>	PSI	Kpa	Bar
9	128	880	8.8
9.1	129	890	8.9
9.2	131	900	9
9.3	132	910	9.1
9.4	133	920	9.2
9.5	135	930	9.3
9.6	136	940	9.4
9.7	138	950	9.5
9.8	139	960	9.6
9.9	141	970	9.7
10	142	980	9.8



# VIZZONI

## TIRES

Vizzoni Auto United DMCC

Registered Office - Unit 2702, Jumeirah Business Centre 2, Jumeirah Lake Towers, Dubai, P. O. Box: 42429 Dubai  
United Arab Emirates, Phone : +971 545 088212 Email : [sales@vizzoni.com](mailto:sales@vizzoni.com)